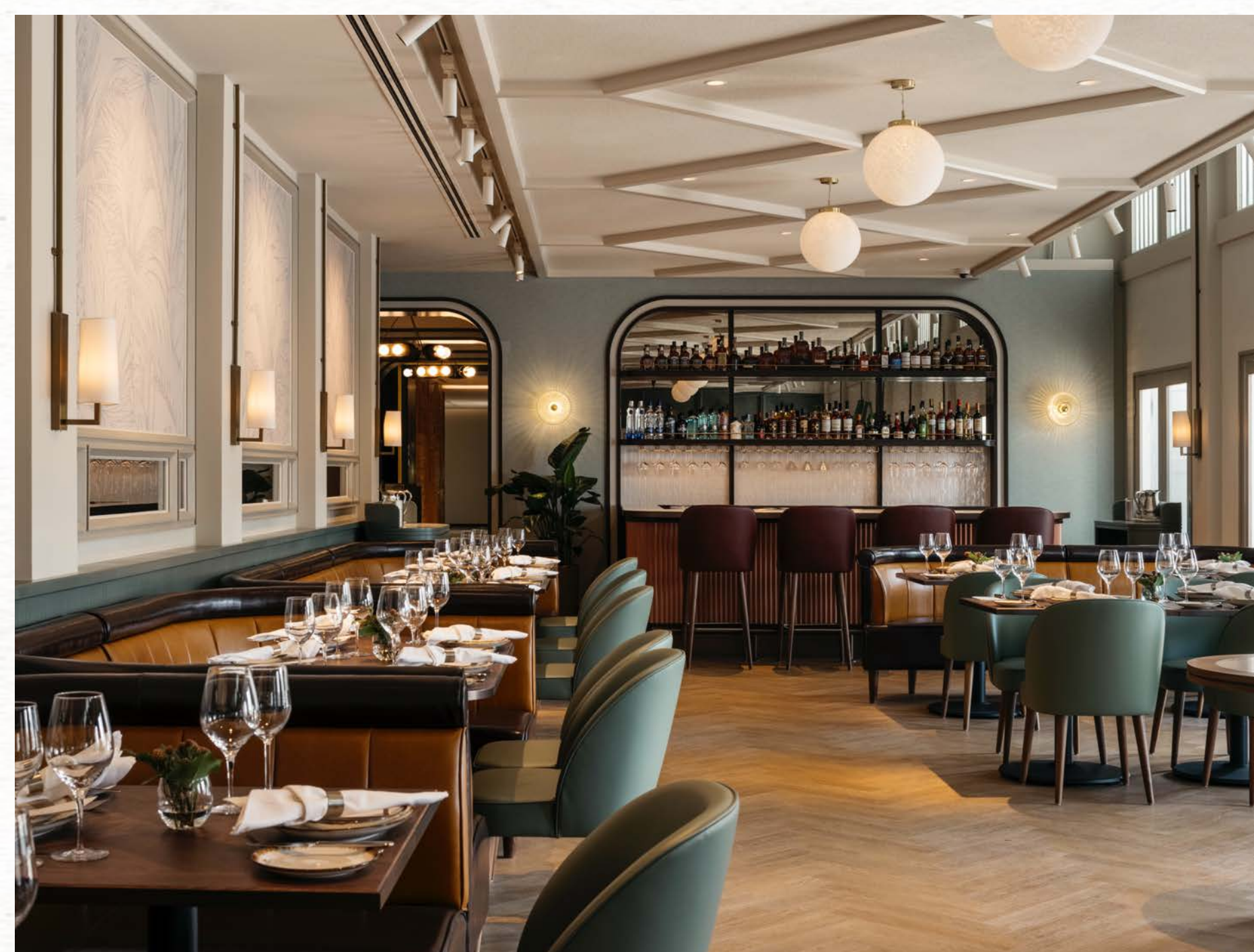


B E D R O C K  
O R I G I N

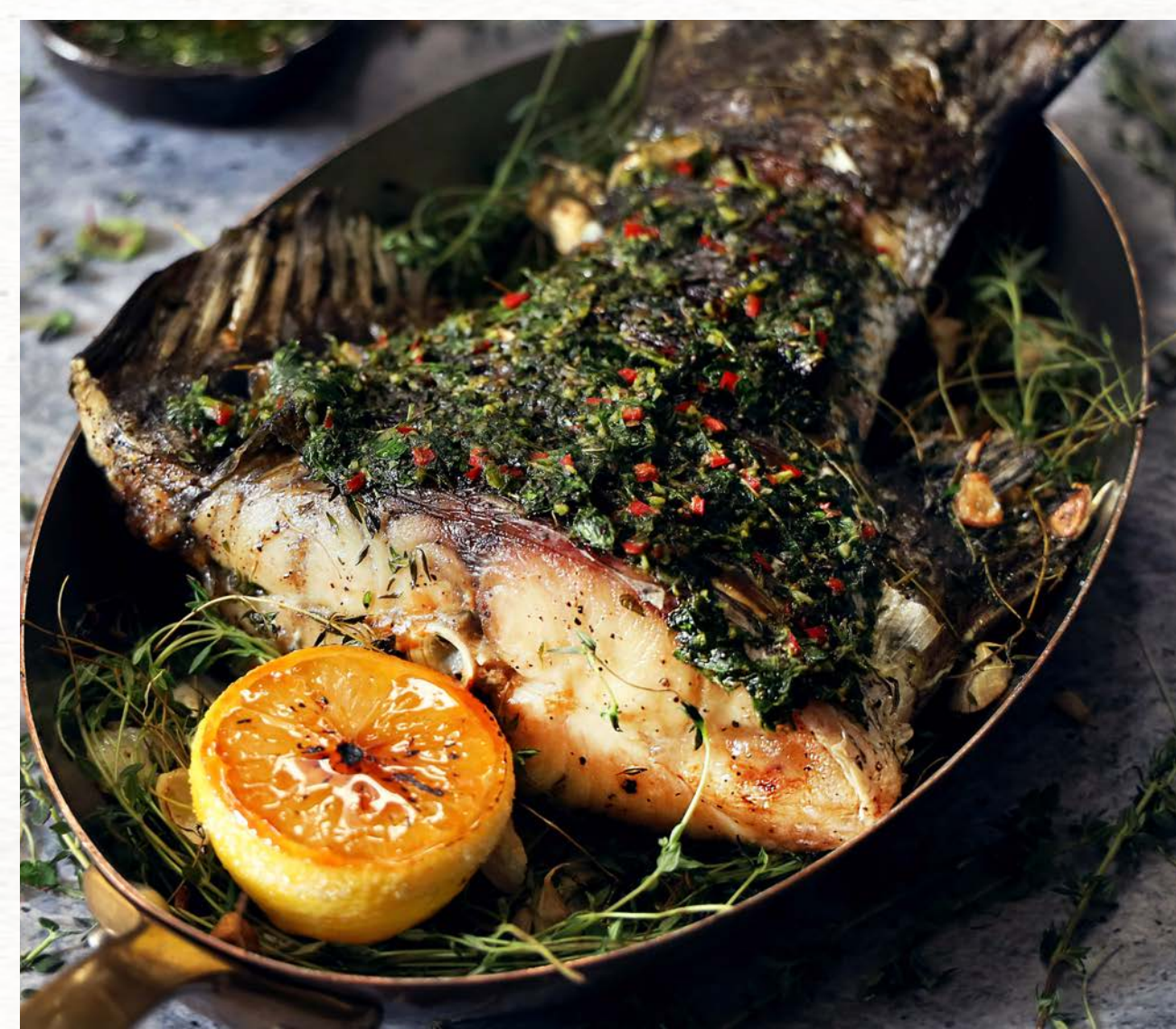
---

EVENTS



## AN ANTICIPATION BEGINS WITHIN

In an evolution of Bedrock's primal dining experience, Bedrock Origin brings to the table a cuisine reflecting the elements of its idyllic coastal locale, where land and sea come together.



## FLAVOURS FROM THE GRILL

Look forward to a selection of the finest steak cuts prepared using primal techniques over an authentic applewood fire grill, and an exclusive selection of seafood, including the all-new 'Origin Specialties' of delectable fish dishes.



## DYNAMITE BOMBE ALASKA

Enliven your celebration with Singapore's biggest Dynamite Bombe Alaska. An impressive fiery showstopper with raspberry white chocolate ice cream, and butter cookies, enrobed in torched meringue, finished with a stunning flambe of rum for a theatrical finale.





## NUTTY CHOCOLATE CRUMBLE CAKE IN A BOX

Give a thoughtful gift to your guests with the Nutty Chocolate Crumble Cake in a box. Made for celebrations, this rich, moist butter cake is loaded with chocolate chips, ground pecans, and walnuts for a dense crunchy texture.

## VINTAGE WINES & WHISKIES FROM THE BAR

Host a cocktail reception with a selection of fine drinks such as premium whiskies from around the world, which includes boutique distillers from the Scottish Isles and rural Japan, curated Woodford Reserve cocktails, and certified organic and biodynamic fine wines.





## CELEBRATIONS AT THE DINING ROOM

Have a relaxed dining celebration with guests in the airy, intimate main dining space, with a warm ambience, and contemporary décor that exudes grandeur.

Main Dining Hall: 44 seats



## AN PERSONAL SETTING IN THE APPLEWOOD ROOM

A cosy, private space, enclosed but roomy, where conversations flow alongside good food and good drinks. The large room can be split into two smaller private rooms, with up to 24 seats.

Full private dining room: 24 seats  
Split private dining room:  
14 seats and 10 seats





## SUNSET AT THE VERANDAH

At dusk, fairy lights create an ambient glow around you as you take in the views of the open sky. Soak into the relaxed, chill vibe on the island as you take things slow and sip on your favourite wine or cocktail.

Verandah: 32 seats

Terrace (unsheltered): 24 seats

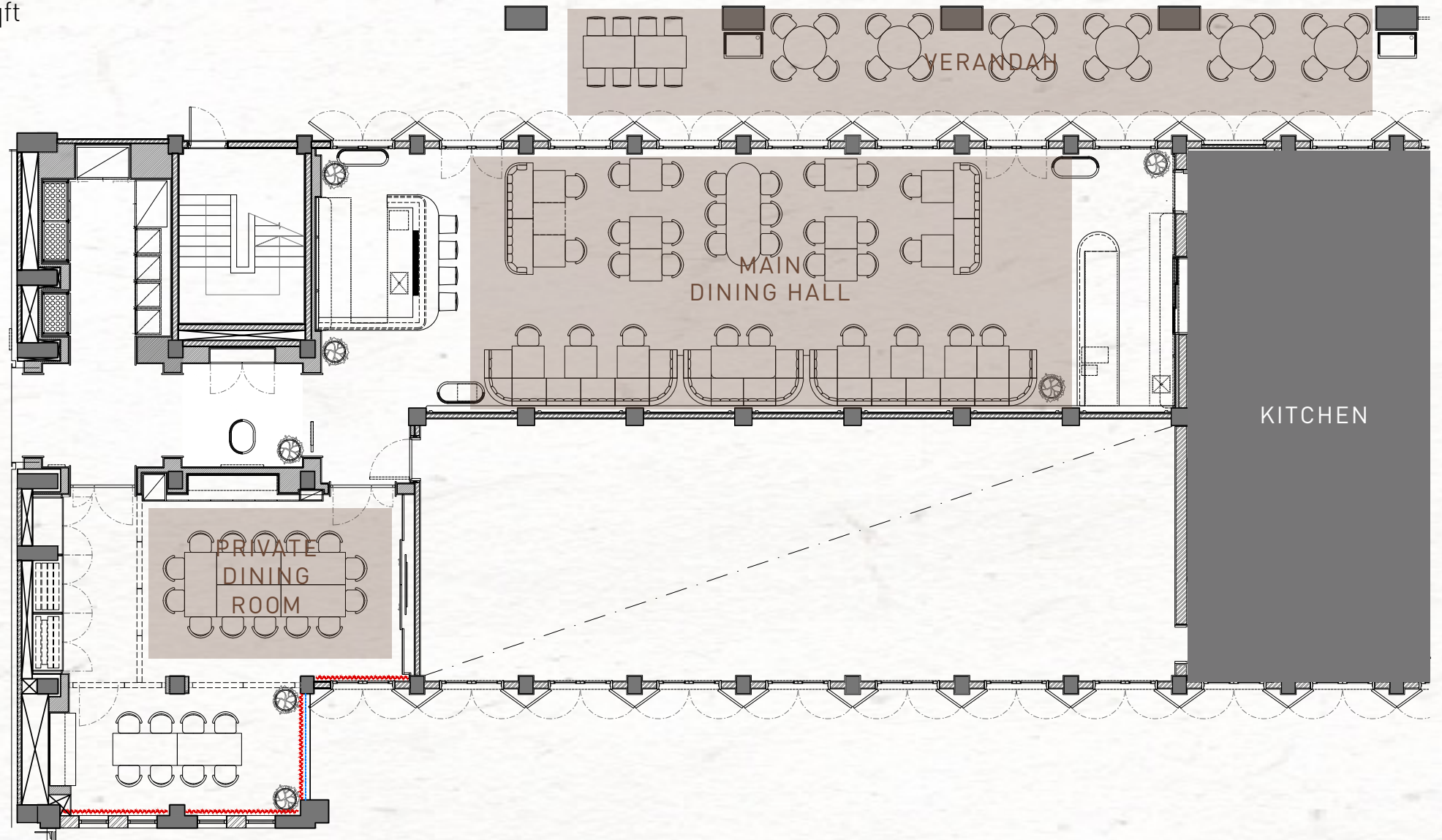
# FLOOR PLAN

PDR 654 sqft

Main Dining Room 1334 sqft

Verandah 893 sqft

Outdoor Terrace 904 sqft





## GET IN TOUCH WITH US

Tel: +65 6818 3333 / +65 9787 4943  
Email: [enquiry\\_origin@bedrock.com.sg](mailto:enquiry_origin@bedrock.com.sg)

23 Beach View Palawan Ridge,  
#01-02, Oasia Resort Sentosa Hotel  
Singapore 098679

## GETTING HERE

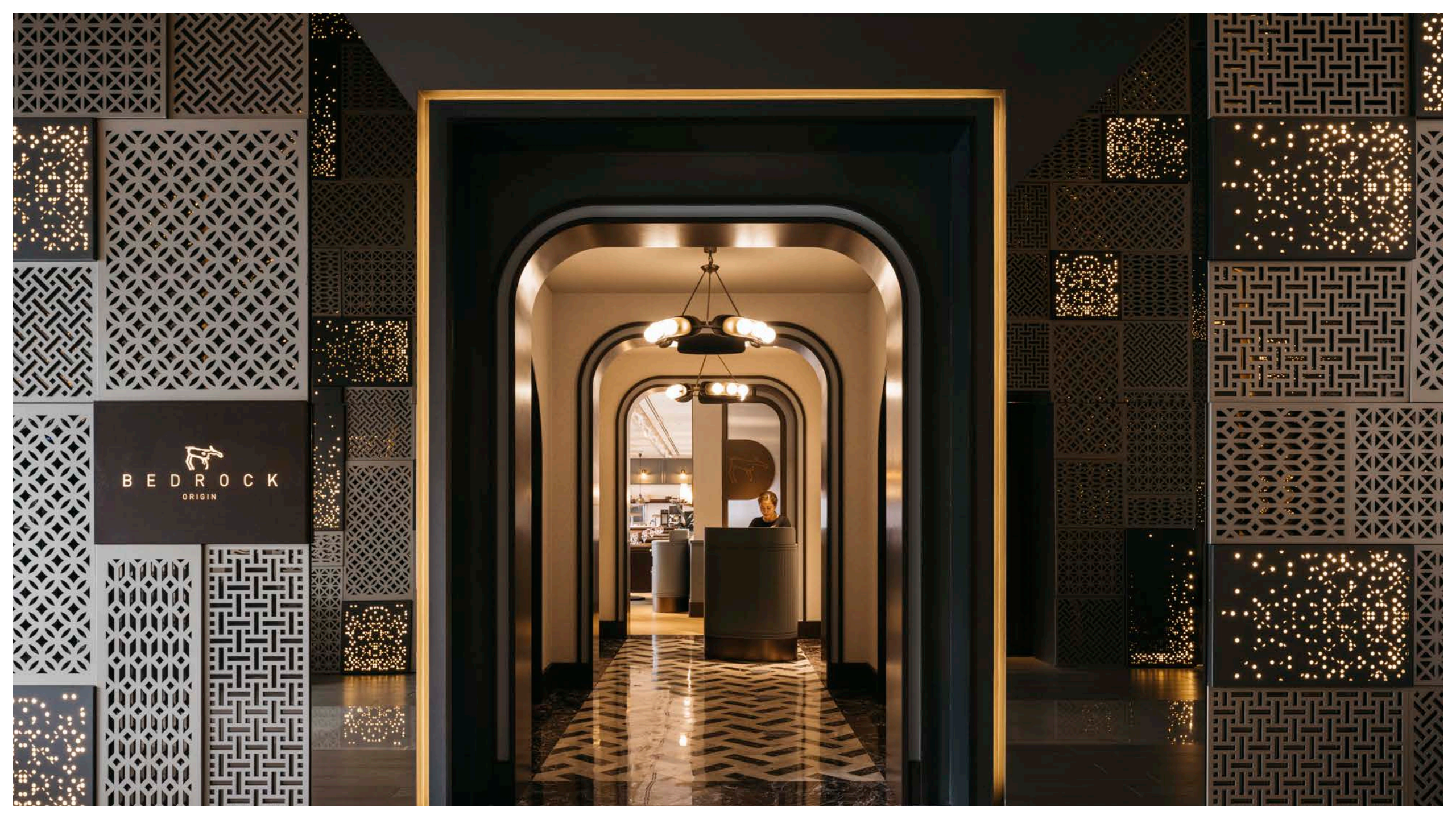
Sentosa Express Monorail / Imbiah Station  
1-min walk

HarbourFront MRT  
32-min walk / 11-min via monorail

VivoCity / HarbourFront Centre  
5-min drive

[www.bedrock.com.sg](http://www.bedrock.com.sg)

 BedrockSingapore  Bedrocksg



  
BED ROCK  
ORIGIN